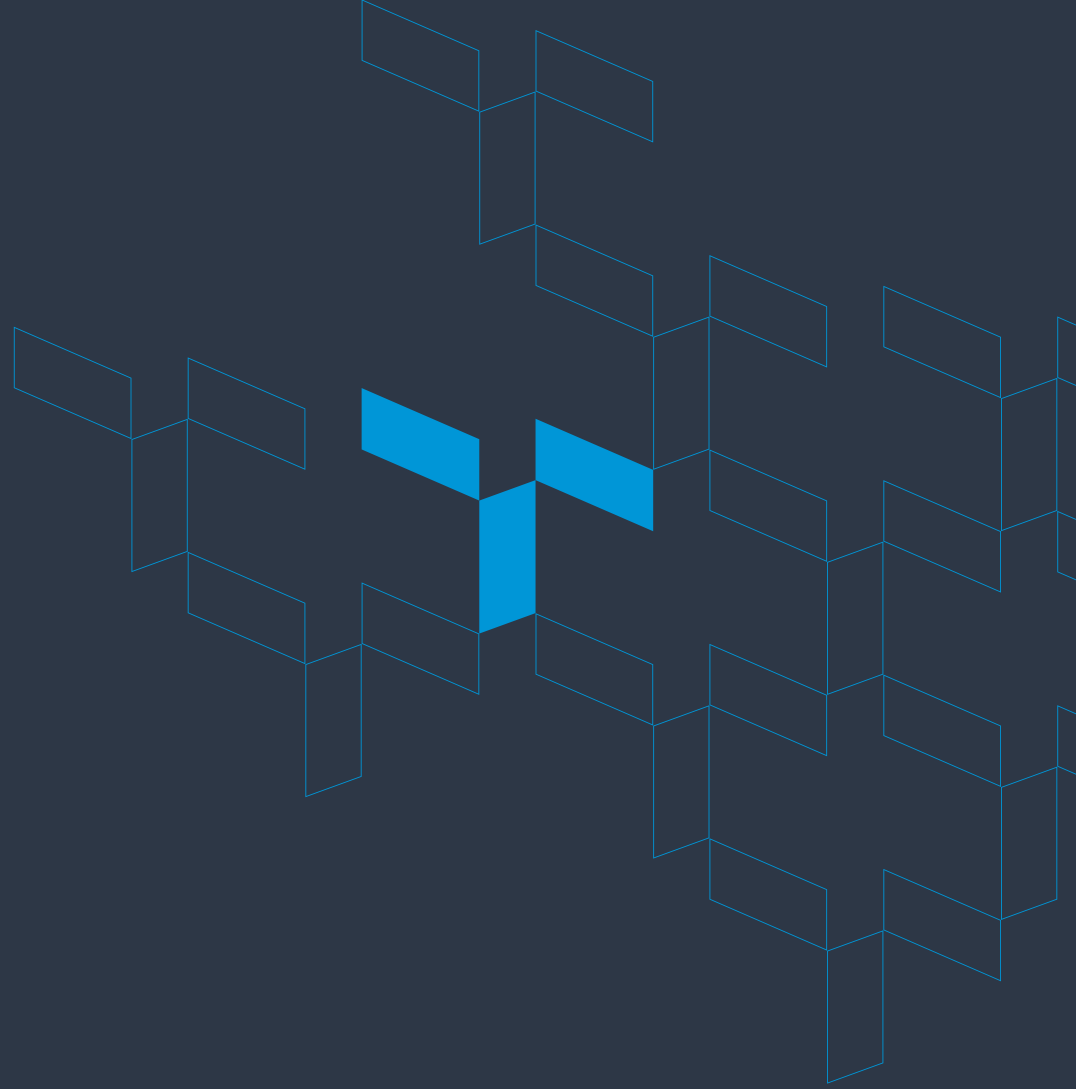


# ICT Services and Products





Türksat Satellite Communication Cable TV and Business Inc.

Konya Yolu 40. Km Gölbaşı  
06839 Ankara, Türkiye

T +90 (312) 615 30 00  
F +90 (312) 499 51 15

egov-projects@turksat.com.tr  
<https://bilisim.turksat.com.tr>



**ICT Services and Products**



We offer services from the  
ground to the sky





## We Shape the Digital Future

Information and communication technologies are rapidly evolving, driving significant transformations across various sectors, from business processes to public services. At the core of this transformation, digitalization requires seamless integration of human, process, and technology elements.

Türkiye has gone through a digital transformation since 1990s with the support of governmental policies, is not only advancing technology but also shaping the future.

As Türksat, we have been at the forefront of digital transformation because of Information Society Strategy and Action Plan (2006 - 2010). We offer innovative solutions by staying ahead of the latest technologies. Today, as a leading public technology company, we are shaping the digital future with our extensive range of services.



## Core Services

*We harness technology to shape the future!*

### Satellite Communication Services



6 Satellite  
3 Orbit  
5M+ Subscribers  
40M+ Homes  
200+ HD TV  
500+ Channels

### e-Gov Solutions & ICT



e-Gov Gateway  
e-Solutions  
Services  
Products

### Cable TV and Internet Services



Kablonet  
KabloTV  
Kabloses  
TV Her Yerde

## WHY TÜRKSAT

### WE MANAGE TECHNOLOGY AND SHAPE THE FUTURE

#### Where Trust and Technology Meet

With a strong commitment to sustainability and high-quality service, Türksat is a leading public technology company that places the highest priority on public interest and information security.

#### Pioneer in Digital Transformation, Power Shaping the Future

Since 2008, we have been managing and operating Turkey's e-Government Gateway, and since 2012, we have been implementing and operating the e-Government transformation for the Turkish Republic of Northern Cyprus. With our expertise in project management and solution development, we offer end-to-end solutions that drive digital transformation.

**150 +**

**Customers**

**450 +**

**Certified  
Technical  
Experts**

**500 +**

**Successfully  
Achieved  
Projects**



## CONTENT

- ▀ e-Government Gateway Services
- ▀ Primary e-Transformation Solutions
- ▀ Cyber Security Services
- ▀ Data Center Services
- ▀ AI & Smart Systems Solutions
- ▀ Products

A man with a beard, wearing a blue button-down shirt and a blue lanyard, is looking down at a tablet computer he is holding. He is standing in a server room, with rows of server racks visible in the background. The server racks have glowing green lights. The overall lighting is dim, with the green lights providing a focal point. A blue banner is overlaid at the bottom left of the image.

**e-GOVERNMENT GATEWAY**

# e-Gov Statistics

*Beyond Digital—Pioneering the Future of Smart Governance!*



United Nations  
e-Gov Survey

Year	# of Countries	Rating Class	e-Gov Development Index	Online Services Index
2024	193	V3	27 (0.8913 points)	13 (0.9225 points)

<https://publicadministration.un.org/egovkb/en-us/data-center>



THE WORLD BANK

Year	# of Countries	Group	GTMI	%
2022	198	A	Very High	35

<https://cdn.www.gob.pe/uploads/document/file/4078650/GovTech%20Maturity%20Index.pdf>



Year	# of Countries	Overall e-Gov Score	User Centricity	Transparency	Key Enablers
2023	37	10 (83 points)	2 (99.6 points)	5 (82 points)	4 (95 points)

<https://digital-strategy.ec.europa.eu/en/library/digital-decade-2024-egovernment-benchmark>

<https://digital-strategy.ec.europa.eu/en/library/egovernment-benchmark-2023>

**e-GOVERNMENT GATEWAY of TÜRKİYE:**  
<https://www.turkiye.gov.tr>

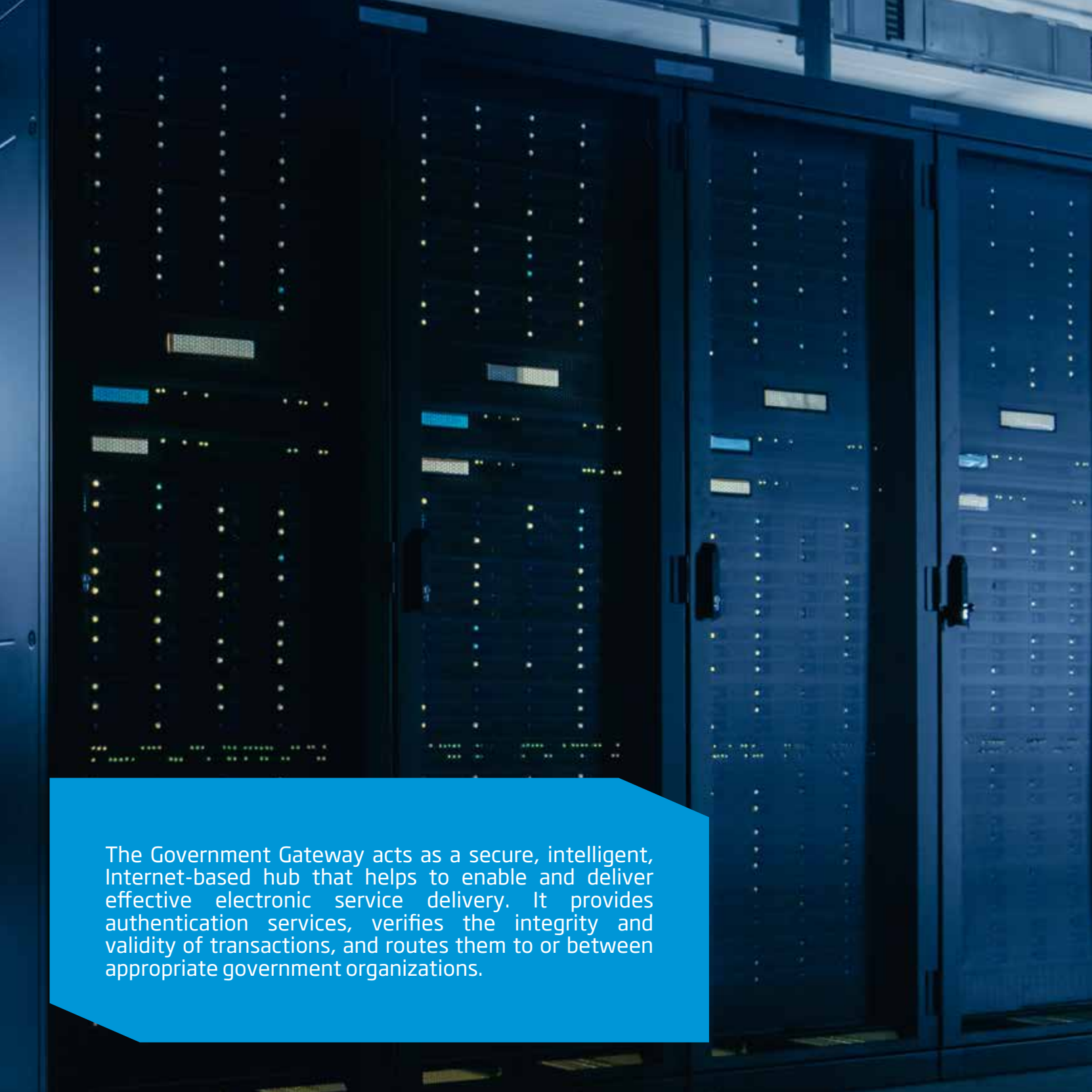
**~70 M**  
**Users**

**~10 K**  
**Services**

**1000 +**  
**Gov. Inst.**

**5000 +**  
**Mobile Services**

**~11 B**  
**Annual Usage**



The Government Gateway acts as a secure, intelligent, Internet-based hub that helps to enable and deliver effective electronic service delivery. It provides authentication services, verifies the integrity and validity of transactions, and routes them to or between appropriate government organizations.



We provide comprehensive end-to-end solutions for government institutions undergoing digital transformation. With a robust infrastructure and a team of experts, we enable efficient, secure, and expedited transactions for both citizens and institutions through the seamless implementation of e-Government Gateway services.

**Our Service Scope:**

**Consulting:** Strategic planning and guidance

**Design & Development:** Innovative solutions

**Adaptation and Installation:** Integration processes

**Maintenance Support:** Uninterrupted service guarantee

**Sustainable:** Continuous management and optimization

**Baseline Services of e-Gov Gateway Solution**

*Empowering Citizens with e-Gov Services - From Inquiries to Payments, All in One Gateway*

Our approach to e-government portal consists of the following application modules described below.

**Inquiry Services**

*Fast and Secure Access to Personal Information*

These services allow users to easily query their personal information stored in relevant institution's records. During the inquiry process, a secure, one-time data flow is established between the institution and the e-Government Gateway.

These types of services are provided through a user-friendly interface and are typically completed quickly and efficiently on a single screen.



AUTOMATION



INTERNET OF THINGS



CUSTOMERS



TECHNOLOGY



INNOVATION



DATA



SOCIAL MEDIA



## Application Services

*Streamlining Public Transactions - Fast, Secure, and Effortless via application services*

Through the e-Government Gateway, requested user data and documents are securely transmitted electronically. Users can easily request governmental documents or services and track its progress at every stage.

The application services are accessible via intuitive, user-friendly interfaces, ensuring that data transfers are fast and secure, allowing transactions to be completed efficiently and securely.

## Integrated Services

*Connecting Services, Empowering Citizens-Integrated Solutions on One Platform.*

A service that enables an institution receiving an application to automatically retrieve the necessary data or documents with the applicant's consent by accessing relevant records from other institutions or organizations via a single platform.

## Verifiable Barcoded Document

*Secure, Fast and Fraud-Free Transactions with Barcoded Documents*

Documents requested from institutions and organizations are generated with barcodes through the e-Government Gateway. Verification and sharing of these documents can be easily managed through the same platform.

Barcoded documents are securely stored by institutions, enhancing document security and preventing forgery. These services ensure faster and more reliable transactions.





## **Payment Services**

*Fast, Secure, and Convenient Payments - Simplifying Public Services with One Gateway.*

Payment services established through the National Card Center makes citizens' lives easier by allowing them to process their transactions quickly and securely. Transactions such as tax inquiries' and exam fee payments, can easily be completed through a single Gateway.

Any institutions that do not currently benefit from E-Gov Gateway Payment Service can apply to accept payments for their services or institutions already benefitting can append new services for payments.

## **Notification Services**

*Instant Alerts, Seamless Connectivity - Stay Informed and Secure with e-Gov Notifications.*

Critical notifications from essential public service sectors, such as telecom, natural gas, water, electricity, and banking, are delivered swiftly and securely through the e-Gov Gateway.

Leveraging a robust information infrastructure, citizens receive real-time updates via multiple channels, including SMS, email, e-Government Gateway inbox, and mobile push notifications.





## Advanced Technology Solutions

### Mobile Wallet

*Your Documents and IDs Are Now in Your Pocket!*

With the e-Wallet application, citizens can securely store their documents and identities created and verified through the e-Government Gateway on their mobile devices. Whenever needed, they can easily access them from their e-Wallet.

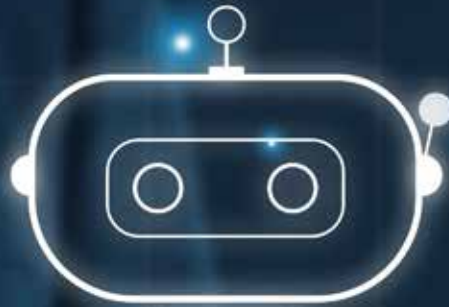
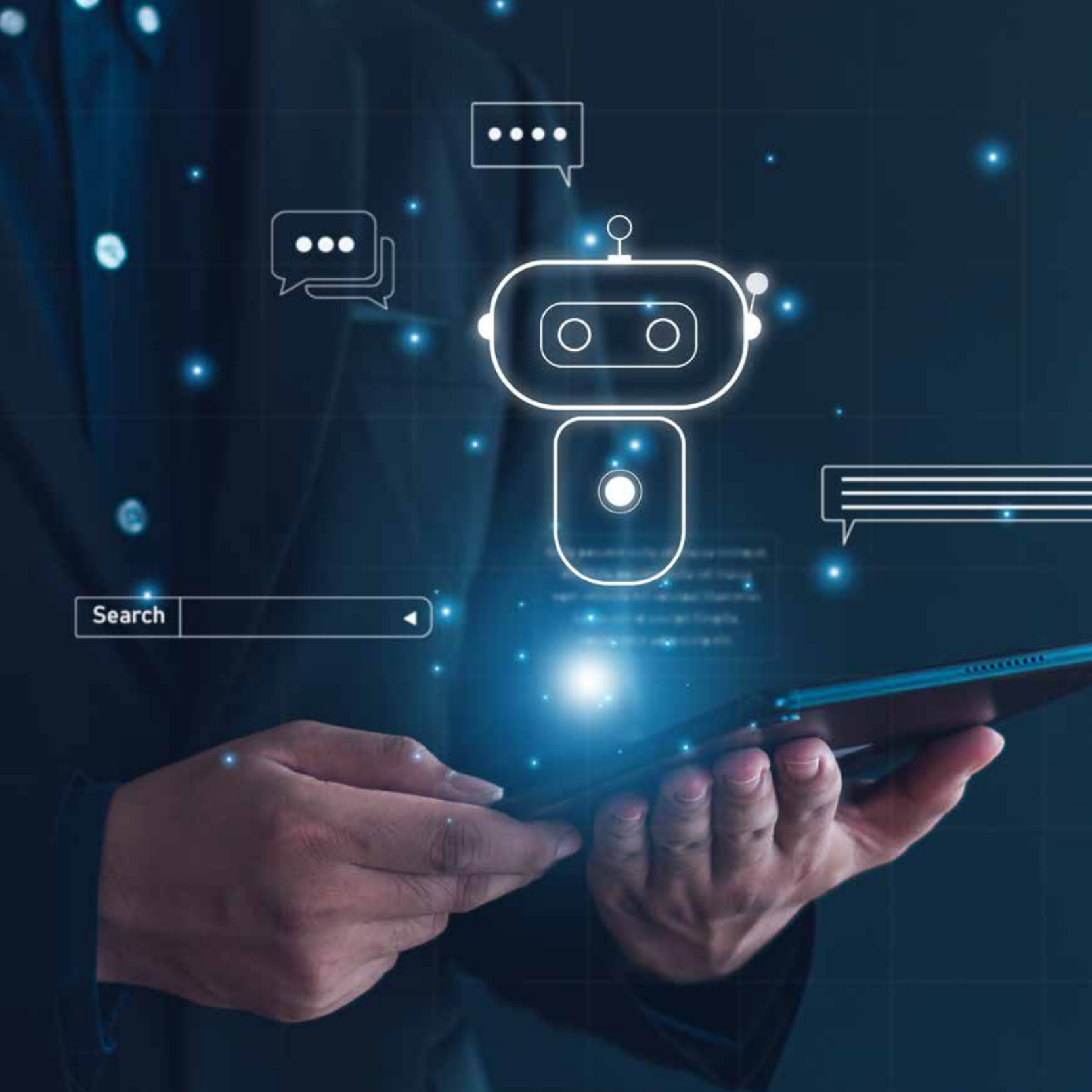
### Advantages of the e-Wallet application

- Security
- Ease of integration
- Sustainability
- Mitigating issues during the login process

## Analytics Solution

*Unlock Powerful Insights, Enhance Your Digital Strategy*

Türksat Analytics is a powerful tool for high-traffic websites that provides detailed insights for your website and mobile application. It offers a secure analysis environment where institutions can analyze visitor behavior, traffic sources and users' platforms (IOS, android, OS version, etc.). This enables institutions to improve user experience, bolster their digital presence and formulate their strategies based on data driven insight.





## Chatbot Solution

*Increase your efficiency and improve your service quality by strengthening your user experience with automation*

Chatbot is designed to efficiently categorize user emails and provide rapid responses to improve user access to essential services through the voice and text AI engine.

This system simplifies user service-finding process by utilizing AI that can understand and respond to a wider range of questions more dynamically.

### Advantages of Chatbot Solution

**Increased Productivity:** Employees can focus on more value-added tasks as repetitive tasks are automated.

**Cost Savings:** Reduced manpower, errors are minimized, and operational costs are reduced.

**Reduced Error Rate:** Human-induced errors are eliminated, which makes processes more reliable.

**Business Continuity:** AI operates 24/7 to ensure the seamless business process continuity.

**Customer Satisfaction:** Increases customer satisfaction thanks to faster and error-free service delivery.



## G2G Service Center for Government Institutions

*Secure Data Sharing amongst Official institutions with the G2G Service Center.*

The G2G Service Center is an innovative platform that enables Governmental Institutions to securely share data, provide access via web services to other institutions with authorization, and allows them to access essential data related to their services.

With its secure authorization mechanism, this platform offers a flexible structure, allowing Governmental Institutions to deliver various services to different entities through institution-based authorizations.

### Feature Highlights

**Secure Data Sharing:** Secure and fast data transfer through web service delivery between official institutions.

**Access to Statistical Information:** Analyze and evaluate the data from institutional services for deeper analysis.

**Corporate Authorization:** Authorized access to services on the G2G Service Center is granted to the respective institution.



## Labor Application Center

*Fast, Secure and Easy Applications for Public Sector Careers.*

The Labor Application Center is an integrated service that consolidates all job postings from governmental institutions onto a single platform, allowing for online applications. This system ensures that documents and information are quickly and securely transmitted to streamline the application process.

### System Features

**Easy Access:** Allows access to all official job postings from a single point.

**Online Application:** Allows to easily submit applications and documents online.

**Digital Document Sharing:** Submit required documents such as verified certificates, military and criminal records, residency or health reports from respective institutions via web services in job postings. Alternatively, applicants can upload verifiable barcoded documents directly to the system.

## Call Center


*Transform Your Call Center with Data-Driven Insights and Remote Capabilities*

With our advanced call center application, access detailed call reports categorized by specific topics and issues. These reports provide valuable insights to institutions that help create data-driven decision-making support documents and make more informed strategic choices.

A key benefit of our call center service is to allow remote work model. Manage workforce from anywhere to enhance service quality.



**PRIMARY  
e-TRANSFORMATION  
SOLUTIONS**



*We offer strong, reliable and innovative solutions in digital transformation!*

## **Civil Registration & Citizenship IMS (Information Management System)**

*Seamless Identity, Smarter Governance: Transforming Civil Registration & Citizenship System for the Digital Age*

An automated and centralized addressed-based registration service is to ensure secure access to relevant stakeholders.

### **Advantages of the system**

**Automation:** Automating civil registration service speeds up business processes by minimizing human errors.

**Central Data Storage:** Collecting all civil registration data in a central system provides ease of access and management.

**Fast and Secure Data Distribution:** Data transfer to stakeholders in electronic environment provides fast and secure communication.

## **e-Identity and e-Signature System**

*Secure Identity, Seamless Access: The Future of Digital Identification*

The New Generation ID Cards are designed to be durable and internationally compliant, enhancing security by preventing identity theft and forgery while enabling citizens to seamlessly access e-Government services with secure identification.

### **Main Objectives of the Project**

**Production in Accordance with Standards:** Security is enhanced by producing durable ID cards that comply with internationally recognized standards.

**Prevention of Forgery:** Secure Identity Card prevent against copying and forging.

**Easy Access:** Secure Identity Cards allow citizens to fast and easy access to e-Gov Services.





## Education IMS

*Revolutionizing Education by Driving Digital Transformation with Innovation!*

This initiative represents the digital transformation of education services and business processes within the education system, in compliance with relevant legislation. The service aims to establish a sustainable digital transformation in the education sector.

### Main Objectives of the Service

**Legal Compliance:** To ensure that all processes are carried out in accordance with relevant legislation.

**Technological Integration:** To increase efficiency and effectiveness in the educational services by making maximum use of technology.

**Process Improvement:** Optimizing business processes within the education system and streamlining management through digital platforms.

## Customs IMS

*Smarter Customs, Stronger Trade: Powering the Future of e-Customs*

The Customs IMS is to provide modern services that align with global trade norms. This service seeks to enhance service efficiency by modernizing the administrative structure, documents, and business processes.

### Main Objectives of the Service

**Compliance:** Ensure effective customs services in full alignment with international trade norms and/or EU customs legislation.

**Quality Service:** Streamline processes by providing fast and high-quality customs services to stakeholders.

**Process Improvement:** Optimize the organizational structure and business processes of customs administration, and driving digitalization in document management.



## Legal Entity Registration IMS

*Centralized Records, Unified Data, Smarter Decisions: Transforming Legal Entity Management*

The Legal Entity Registration IMS is a centralized information platform designed for legal entities, including foundations, enterprises, associations, and institutions with independent budgets. It streamlines commercial registry processes and electronically stores related data. This system makes business processes more transparent and effective for registered users or individuals and allows to access and act on the stored data.

### Main Objectives of the Service

**Central Information Collection:** To provide easy access to data by collecting legal entity information on a central platform.

**Stakeholder Communication:** To ensure that all stakeholders have access to the data they need quickly and reliably.

**Productivity Increase:** To increase the effectiveness of business processes and to enable faster and more accurate decision-making processes.





## Spatial Address Registration IMS

*Streamlining Address Management: Precision, Innovation, and Integration at Every Step!*

The Spatial Address Registration IMS is a crucial element in unifying address data produced by various authorities including Municipalities, Special Provincial Administrations and Organized Industrial Zones across the country in a common data model, while ensuring that this data remains current. It facilitates modern address management by incorporating satellite image acquisition, mobile cartography, geographic data production, and software development processes.

### Main Components of Our System

**Satellite Image Supply:** Enhance address data accuracy with up-to-date, high-resolution satellite images.

**Mobile Cartography:** Collect three-dimensional environmental data using fast and precise data collection technology.

**Numbering Studies:** Organize the address system and ensure systematic number distribution in residential areas.

**Software Development:** Support all processes with user-friendly interfaces and efficient software solutions.





## Health IMS

*Take your healthcare services to the future with Revolutionary Innovative Solution. Increase your service quality and maximize patient satisfaction*

The Health IMS in line with national standards, is an effective system designed to enhance the quality of service offered to patients and enables health services to adopt an approach centered on the needs of both health institutions and patients, ensuring accessibility across the country.

### Key Features of Our Project

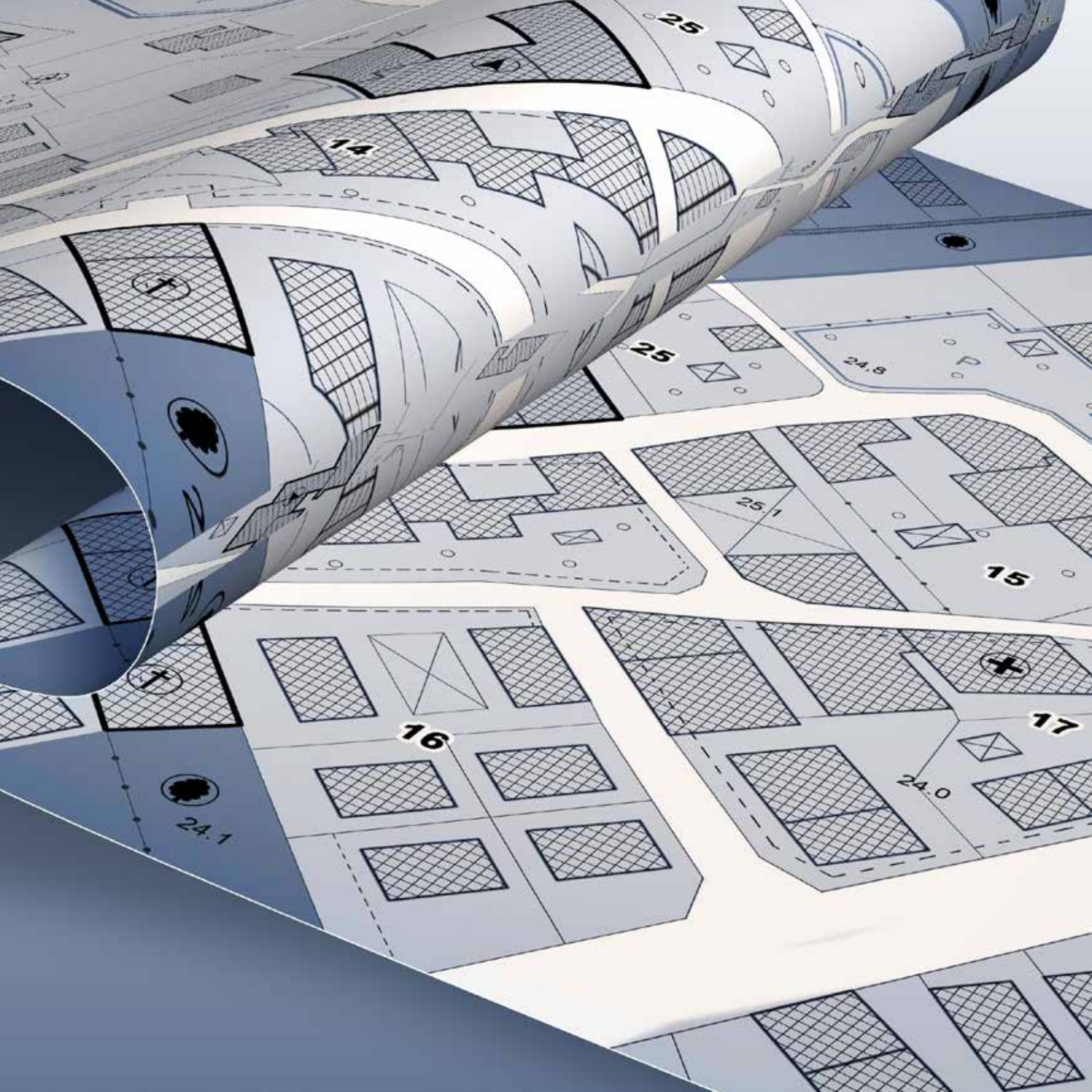
**Fast and Easy Access:** Facilitate citizens' access to health information by providing fast access to health services from anywhere, anytime.

**High Quality Standards:** Enhance the effectiveness of health services by improving the quality of care provided to patients.

**Institution-Patient Oriented Approach:** Develop tailor-made solutions by strengthening the interaction between health institutions and patients.

**Benefiting from New Technologies:** Contribute to the modernization of the health system by integrating the latest technologies to increase efficiency.

- Patient Information Management System (HIMS)
- Healthcare Personnel Data Base
- Healthcare Providers Management Module
- Material Resource Management System
- Core Resource Management System
- Contract Management Module
- Rule Engine Management Module
- Pharmaceuticals, Medical Equipment
- Dental & Lab Materials & Cosmetics DB
- Pharmaceutical Track and Trace Module
- e-Prescription Module
- e-Pharmacy Module
- Physician Appointment System
- Personal Health Record Module



25

14

25

24.8

25.1

15

16

17

24.1

24.0



## Land Registry and Cadastre IMS

*Empowering Nationwide Real Estate Access and Efficiency Through Digital Innovation.*

The Land Registry and Cadastre IMS is a system that digitally gathers real estate data nationwide, enabling easy access for citizens and relevant institutions. Essential processes such as title deed transactions, tax payments, and appointment management are conducted swiftly and securely.

**Land Registry and Application:** Performs title deed transactions in a digital environment and accelerates the processes.

**Cadastral Application:** Allows parcel information to be queried quickly.

**Parcel Query:** Provides instant access to cadastral information.

**Title Deed Service Sharing System:** Shares title deed information securely.

**Investment Tracking System Application:** Monitors and guides investment processes.

**Web Title Deed System:** Provides easy access to title deed transactions over the internet.

**Cadastral Drawing Software:** It enables cadastral maps to be created and digitally edited.

**Archive Application:** Provides digital archiving of all title deed and cadastral data.

**e-Signature Application:** Provides secure digital signature transactions.

**e-Collection System:** Allows tax payments to be made online.

**Appointment System:** It makes it easy to make an appointment for title deed and cadastral transactions.

**e-Advertisement Application:** It publishes title deed advertisements in digital environment.

**Personnel Performance Application:** Monitors the performance of land registry and cadastre personnel and offers opportunities for improvement.





## Social Security IMS

### *Comprehensive Solutions for Every Stage of Social Security*

The Social Security IMS is a comprehensive platform designed to deliver quality health and social security services to beneficiaries at every stage of lives, from birth to death and beyond.

#### **Key features of the system**

**Lifelong Service:** Facilitating access to social security services by providing continuous support to citizens throughout their lives.

**Support to Beneficiaries:** Ensuring the well-being of beneficiaries by granting them prompt access to the social security services they require following a death.

**Comprehensive Information Management:** An integrated system designed to deliver timely and appropriate services to citizens' needs by efficiently managing insurance information.

- Employer Module
- Insurance Module
- Accounting Module
- Legal Operations Module
- Payment Transactions Module
- Control Module





## Labor IMS

*Elevate Employment by regulating and supervising Work Life  
Innovating Labor Management for a Transparent and Coordinated Future*

The Labor IMS is a system that regulates and supervises working life and employment processes by effectively monitoring and reporting on labor policies. It promotes the exchange of information and ensures coordination among the various stakeholders and institutions involved in generating and utilizing labor market data and analysis.

### **Key features of the mechanism**

**Regulation and Supervision:** Creating a sustainable employment environment by regulating all aspects of working life.

**Policy Monitoring and Reporting:** Ensuring transparency by effectively monitoring employment and labor policies and providing regular reports.

**Coordination and Cooperation:** Promoting the exchange of information between different actors and institutions, making labor market analyses more efficient.

- Employer Module
- Insurance Module
- Accounting Module
- Legal Operations Module
- Payment Transactions Module
- Control Module





## Social Services IMS

### *Inclusive Support, Streamlining Care: Effective Process Management in Social Services*

The Social Services IMS is a system that efficiently monitors all support and processes within the realm of social services, with the goal of delivering improved services to those in need.

#### **Key features of the mechanism**

**Full Comprehensive Monitoring:** Making service processes more efficient by regularly monitoring the needs of individuals who benefit from social services.

**Coordination and Support:** Ensuring the integration of support processes through effective communication and collaboration among social service stakeholders.

**Transparency and Accountability:** Creating transparency and accountability in the field of social services by increasing the traceability of the services provided.

- Assistance for the Impoverished Module
- Statistics Module
- Martyr, Veteran, Disabled Transactions Module
- Scholarship Module
- Family, Child, Nursery Operations Module
- Foster Family Procedures Module (Adoption)





## Government Personnel IMS

*Revolutionize Civil Service with secure automated systems and increase your process efficiency*

The Government Personnel IMS is a fully automated system to quickly and securely process civil servant transactions, increasing process efficiency and saving time for managers.

**Personnel Registration Module:** Organizing and making personnel information easily accessible.

**Personnel Operations Module:** Streamlining personnel transactions, ensuring speed and accuracy.

**Pension Transactions Module:** Automating pension processes, providing timely and accurate information.

**Time Management Module:** Tracking staff working hours, leaves, and overtime effectively.

**Runner Allowance Module:** Calculating travel expenses quickly and accurately.

**Performance Management Module:** Monitoring personnel performance regularly and offers development opportunities.

**In-Service Training Module:** Identifying personnel training needs and manages development processes.

**Material Module:** Tracking the materials required by personnel.





## Government Asset IMS

*Elevate Efficiency in Public Institutions with Smart Asset Management & prevent loss or misuse of resources*

The Government Asset IMS is a system to ensure the effective management of materials, warehouses, fixtures, and official service vehicles in public institutions, preventing loss or misuse of resources while increasing productivity.

**Warehouse Management Module:** Regulating warehouse processes and manages inventory.

**Fixture Management Module:** Systematically monitoring the fixtures of public institutions.

**Official Service Vehicles Management Module:** Ensuring the efficient use and maintenance of official vehicles.



**CYBER SECURITY**

## 24/7 Managed Security

*Strengthen Your Digital Future with Reliable and Resilient Türksat Cyber Security.*

TÜRKSAT Cyber Security Operations Center offers Managed Security Services designed to assess and address the cybersecurity needs of organizations, leveraging expert staff to deliver effective and tailored solutions.

### **Advantages of Our Service**

**Expert Analysis:** Industry-leading experts conduct comprehensive analysis in identifying your cyber security needs and delivering effective solutions.

**Accessibility:** Allows organizations with limited resources and budgets to easily access robust cybersecurity solutions.

**Maturity Level Development:** Enhances the cybersecurity maturity of institutions, creating a more resilient and secure infrastructure against cyber threats.

- SIEM - Cyber Security Event Log Collection
- FW - Firewall
- IPS - Intrusion Detection and Prevention
- DDoS - Attack Prevention
- WAF - Application Firewall
- EDR/MDR - Server/End-User Endpoint Threat Detection and Incident Response
- e-Mail Security Service and e-Mail Spear-Based Attack Prevention
- Web Applications Security Scan & Source Code Analysis & Continuous Vulnerability Scan
- NDR/MNDR - Intelligent Network Detection and Response
- Cyber Threat and Intelligence
- Malware Analysis and File Sterilization
- PAM - Secure Access Management
- DLP - Data Leak Prevention
- URL Filtering
- DAM - Database Event Monitoring
- ITSM - Process Management
- Honeypot - Virtual Deception System





## Cyber Security Testing and Simulation Services

*Enhance Security with Proactive Vulnerability Analysis - Protect Against Digital Threats*

Comprehensive services are designed to identify, analyze, and report security vulnerabilities in network and system components, as well as corporate applications, ensuring the digital security of business.

### Key Features of Our Service

**Vulnerability Detection:** Overcoming potential risks by identifying security vulnerabilities in network and system components

**Analysis and Reporting:** Analyze relevant vulnerabilities and generate business-specific reports to enhance your security strategies.

**Cyber Simulation:** Take proactive measures by detecting security vulnerabilities before they can be exploited by attackers.

- Source Code Analysis
- Infrastructure Qualification Tests with Drill Simulation/Emulation
- DDoS Testing
- Penetration Testing
- Aperture Attack Simulation
- Network Security Devices Performance Test
- Network and System Tests
- Web Application Tests
- Endurance Measurement with Out-of-Service
- Wireless Network Security Audit
- Mobile Application Security Testing
- Social Engineering Tests



## Security Operations Center Infrastructure

*From Analysis to Support, We Secure Your Digital Infrastructure*

The Cyber Security Operations Center Infrastructure service is designed to strengthen your cyber security infrastructure and covers all processes, starting with needs analysis. This service aims to determine the right capacity and product requirements, manage procurement processes, position and configure the products, and effectively handle technical support processes.

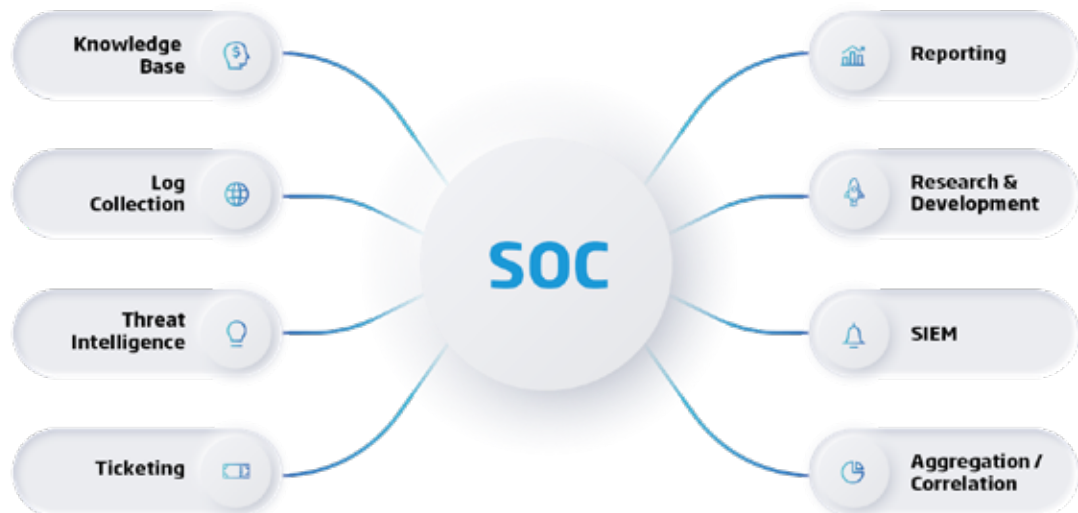
### Details of Our Service

**Needs Analysis:** A detailed analysis is conducted on the components of the cybersecurity infrastructure to determine specific needs.

**Correct Product Selection:** We ensure the selection of the right products to meet your needs and effectively manage the procurement process.

**Configuration and Positioning:** Through strategic positioning and configuration, we ensure the optimal operation of your systems.

**Technical Support:** After infrastructure installation, we provide professional technical support to create a sustainable and secure environment.







## Cyber Security Consultancy Services

*Boost Security, Secure Your Future.*

*Contact our Cyber Security Consultancy to strengthen protection and streamline compliance*

TÜRKSAT's Cybersecurity Consultancy Services provide comprehensive support to ensure regulatory compliance by strengthening security risk management for your IT software and hardware infrastructure. Our goal is to assist institutions and organizations in meeting legislation and standards, identifying weaknesses, and developing an effective roadmap for improvement.

### **Priorities of Our Service**

**Strengthening Cyber Security Infrastructure:** Enhancing security by improving the effectiveness of an existing infrastructure.

**Regulatory Compliance:** Providing guidance and support to ensure full compliance with relevant laws and regulations.

**Facilitating Certification Processes:** Simplifying and streamlining the steps required to obtain the necessary certifications.

### **Our main services include**

**ISO/IEC 27001 Compliance & Consultancy Services:** To ensure compliance with international standards for information security management systems.

**GDRP Compliance and Consultancy Services:** Consultancy services for full compliance with the legislation on the protection of personal data.

**Information & Communication Security Guide Compliance & Consultancy Services:** Identifying ways to increase information and communication security.



## Cyber Security References

*Proven Success in Every Endeavor!*

Nearly **100 institutions and agencies** including **PRESIDENCY of THE REPUBLIC of TÜRKİYE** have been serviced



MINISTRY of  
TREASURY & FINANCE



PRESIDENCY of  
THE REPUBLIC of  
TÜRKİYE  
INVESTMENT  
OFFICE



PRESIDENCY of  
THE REPUBLIC of  
TÜRKİYE  
DIGITAL  
TRANSFORMATION  
OFFICE



PRESIDENCY of  
THE REPUBLIC of  
TÜRKİYE  
DIRECTORATE of  
COMMUNICATIONS



PRESIDENCY of  
THE REPUBLIC of  
TÜRKİYE HUMAN  
RESOURCE  
OFFICE



MINISTRY of  
HEALTH



MINISTRY of  
CULTURE &  
TOURISM



ANKARA  
UNIVERSITY



TURKISH GENERAL  
DIRECTORATE  
of HIGHWAYS



TURKISH DIRECTOR  
GENERAL of COASTAL  
SAFETY



TURKISH  
COURT of ACCOUNTS



TURKISH  
HYDRAULIC WORKS



SINOP  
UNIVERSITY



MARDIN ARTUKLU  
UNIVERSITY



TURKISH ELECTRICITY  
TRANSMISSION  
CORPORATION



ANTALYA  
METROPOLITAN  
MUNICIPALITY



PUBLIC PROCUREMENT  
AUTHORITY



**DATA CENTER**



## Co-Location Services

*Secure Solutions, No Infrastructure Investment - Explore Our Physical Hosting Services*

We offer physical hosting services to institutions and companies, providing professional support in setting up and managing their systems. Host your physical servers in our state-of-the-art data centers, along with secure data storage, and continue your business operations with lower costs and greater flexibility, without the need for any infrastructure investment.

### Advantages of Our Service

**Cost Savings:** Ability to host your physical servers without high infrastructure investment costs.

**Secure Infrastructure:** A high level of security is ensured in our state-of-the-art data centers.

**Flexibility:** We offer scalable solutions according to the needs of your business.

- Flexibility to lease Aisles, Cabinets, or Rack Units (RUs)
- Secure access with multiple Access Provider Infrastructures
- Redundant Energy and Cooling infrastructure
- Physical Perimeter Security
- Open-source Monitoring Tools
- Asset Management
- Request Management
- 24/7 Monitoring
- Operational Support



## Cloud (Virtual Server) Hosting Services

*Manage your virtual servers with solutions customized to your business needs*

TÜRKSAT's virtual server hosting services allow dynamic adjustments to processor (CPU Core) and memory (RAM) capacity. This flexibility allows to scale resources based on your business needs and for optimized performance.

### Features of Our Service

**Dynamic High-Performance Resource Management:** Increase or decrease resources based on business needs at any time.

**Flexibility:** Scalable solutions designed to meet the evolving needs of your business.

- Flexible structure starting at 1 Core CPU and 1 GB RAM
- Quick installation and activation
- SSD and/or SAS storage
- Flexible backup (N+M)
- Flexible contract terms
- Capacity increase at any time
- Replication service
- High performance with scalable infrastructure
- Business Continuity scenarios with geo-redundancy
- Web Application Firewall (WAF)
- 24/7 technical support
- Open-source monitoring tools
- Scalable storage



## Backup and Replication Services

*Ensure Business Continuity - Explore our Data Backup and Replication Services*

TÜRSAT offers comprehensive data backup and replication services for physical and virtual environments to support business continuity and disaster recovery processes.

### Highlights of Our Service

**Comprehensive Backup Solutions:** Safeguard your data with secure backup methods to prevent data loss.

**Disaster Recovery:** Minimize data loss with fast and effective replication processes in case of emergencies.

**Physical and Virtual Environment Support:** Offer flexible solutions with services compatible for both physical and virtual infrastructures.

- Backup at specified intervals
- Virtual and physical server replication
- 100% software-based solution
- Service in different geographical locations



## Maintenance and Support

*Protect Your IT Infrastructure - Discover our Maintenance and Repair Services*

Comprehensive maintenance and support services for your complete IT infrastructure or any information technology products, tailored to specific product requirements.

### Features of Our Service

**Comprehensive Support:** Our services cover your entire IT infrastructure, ensuring optimal system performance at all times.

**Product-Based Solutions:** Our expert team provides tailored maintenance and repair services for specific products, addressing your unique needs.

**Uninterrupted Business Continuity:** Through timely maintenance and repair, we ensure your business operations remain uninterrupted by meeting your technological needs efficiently.





## Open Source Database Consulting

*Efficient Data Management Solutions - Discover our PostgreSQL consulting services*

PostgreSQL is a high-performance database known for its platform independent structure and large data storage capacity. Our expert team offers comprehensive consultancy services to help you fully leverage the advantages of PostgreSQL.

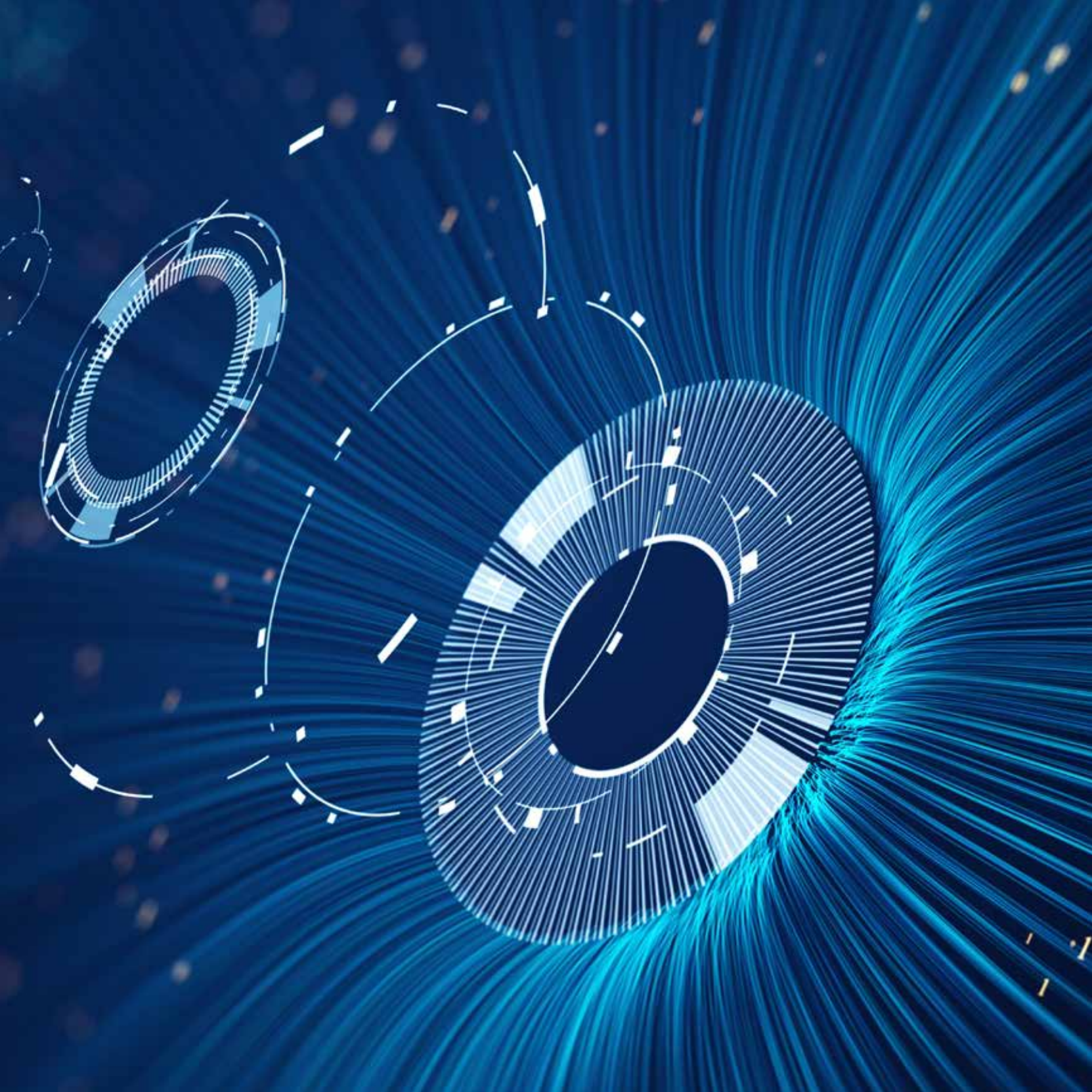
### Advantages of Our Service

**Expert Team Support:** Our experienced database management experts enhance your business efficiency by providing tailored solutions.

**Platform Independence:** PostgreSQL's flexible structure ensures smooth operation across different platforms.

**Performance Optimization:** Boost your business performance with optimizations that enable safe and efficient data management.

- Analysis
- Database design and installation
- Data migration
- Optimization
- Replication
- 24/7 Service Level Commitment (SLA)
- Monitoring and training





## ADVANCED DATA CENTER SERVICES

*Bridging Architecture and Technology: Expert Design, Training, and Consultancy Services*

### Data Center Technical Consultancy Services

Architectural design, training and consultancy services are offered as part of data center services.

- Analysis and architectural design
- Project management
- System administration
- Business continuity management
- Staff consulting
- Education

### DC Architectural Design

TÜRKSAT's specialize in creating optimized, scalable, and secure data center designs tailored to business needs. Our services ensure efficient space utilization, energy management, and infrastructure planning, while adhering to industry standards and best practices. From initial concept to final implementation, we provide end-to-end solutions that support your growing digital infrastructure with reliability and performance.

#### Features of Our Service

**Optimized Design:** Tailored data center layouts that maximize space, efficiency, and scalability to support future growth.

**Energy Efficiency:** Sustainable designs focused on energy management, reducing operational costs while maintaining performance.

**Industry Compliance:** Adherence to global standards and best practices to ensure secure and reliable infrastructure.

**End-to-End Solutions:** Comprehensive services from initial concept through to implementation, ensuring seamless execution at every stage.





## Turnkey DC Construction

TÜRKSAT offers end-to-end turnkey solutions for data center construction, handling every aspect of the project from designing, planning, construction and handover. Our certified team collaborates with customers, starting from analyzing their requirements to designing and planning solutions that meet their needs in performance, security, and energy efficiency, all while adhering to their established budget.

### Service Features

**Full Project Management:** From design to completion, we manage all aspects of the construction process, ensuring timely delivery and adherence to specifications.

**Customized Solutions:** Tailored designs and construction plans to meet your unique operational requirements and scalability needs.

**Energy-Efficient Construction:** Focus on sustainable practices and energy-efficient systems to reduce operational costs and environmental impact.

**Compliance with Industry Standards:** Adherence to global standards and regulations, ensuring your data center is secure, reliable, and compliant.



600GB  
SAS 15K  
1000000

4500GB  
SAS15K



## IT Installation and Modernization

We offer expert services in the design, installation, migration, and modernization of your data center, tailored to meet international standards and the specific needs of your facility.

### Advantages of Our Service

**Design in Accordance with Standards:** Fulfill your business needs with secure and functional data center designs that adhere to international quality standards.

**Installation and Migration Services:** We offer comprehensive installation services to facilitate seamless data migration to new systems, ensuring they are equipped with the latest technologies.

**Modernization Solutions:** Enhance your performance and stay aligned with new technologies by upgrading your existing data centers.

- Energy Efficient Infrastructure design and installation
- Mechanical infrastructure design and installation
- Data migration
- Design and installation of low current systems
- Network and communication infrastructure design and installation
- Commissioning/Decommissioning of HW
- Operation and maintenance
- Virtualization and database design and installation



## Data Center References

More than **120 different institutions and agencies**  
including **PRESIDENCY of THE REPUBLIC of TÜRKİYE** have been serviced



PRESIDENCY of THE REPUBLIC of TURKEY  
SECRETARIAT- GENERAL of THE NATIONAL  
SECURITY COUNCIL



MINISTRY of  
ENERGY &  
NATURAL  
RESOURCES



MINISTRY of  
JUSTICE



PRESIDENCY of  
THE REPUBLIC of  
TÜRKİYE HUMAN  
RESOURCE  
OFFICE



PRESIDENCY of  
THE REPUBLIC of  
TÜRKİYE  
DIRECTORATE of  
COMMUNICATIONS



MINISTRY of  
CULTURE &  
TOURISM



MINISTRY of  
TRANSPORT &  
INFRASTRUCTURE



MINISTRY of  
HEALTH



TURKISH COOPERATION  
& COORDINATION AGENCY



CENTRAL BANK of  
THE REPUBLIC of TÜRKİYE



MINISTRY of  
AGRICULTURE & FORESTRY



MINISTRY of  
TREASURY & FINANCE



TURKISH DIRECTOR  
GENERAL of COASTAL  
SAFETY



ROKETSAN



**AI & SMART SYSTEMS  
SOLUTIONS**



## **GEOGRAPHIC INFORMATION TECHNOLOGIES**

### **National Spatial Data Infrastructure (NSDI) of Türkiye**

Collecting, storing, and sharing geospatial data at the national level in compliance with Open Geospatial Consortium (OGC) standards and providing AI based geospatial analysis.

- AI-Based Geospatial Analysis
- Value-Added Maps
- Multi-Criteria Vector and Raster Analysis
- Interoperability
- Spatial Intelligence for Smarter Decisions
- Open Data Platform

### **National Environment IMS**

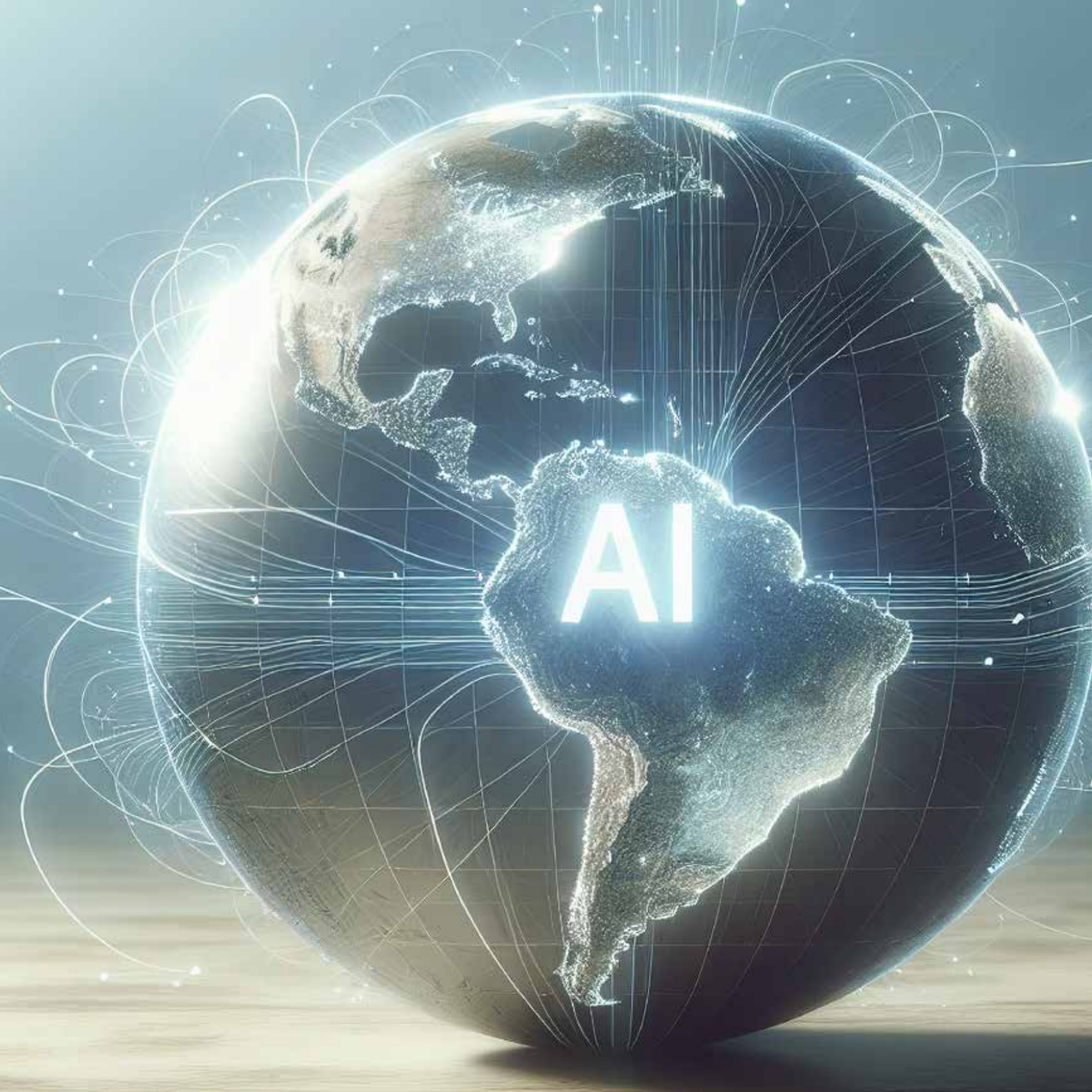
Central management point for environmental operations, including environmental impact assessment and waste management.

- Single Gateway to Environmental Services
- E-Government Integration
- Institution, Company and Identity Verification
- Waste Management
- Environmental Impact Assessment
- Environmental Competence Services
- Environmental Permit and License Applications

### **National Water Resources IMS**

Tracking of water resources from the source to the end user to use them efficiently and to create alternative water resources.

- Centralized Water Management
- Water Efficiency System
- Flood Management
- Drought and Climate Change Integration
- GIS-Based Decision Support





### **National 3D Air Quality System**

Providing advanced algorithms and mapping for air pollution levels. Urban Air Quality Up to 5 Meters Accurately, District-based Health Index Maps and 160,000 Times Increased Data Resolution

### **National OLS/CNS Platform**

GIS-based advanced 2D/3D modeling of airport OLS and CNS surfaces. The platform prepares Building Restricted Area (BRA) for each specified CNS (Communication, Navigation and Surveillance) facilities utilizing their coordinates and types.

### **National Renewable Energy Management**

An advanced GIS platform for efficient process management, energy production areas with high potential, and national green energy geodatabase (Biomass, Wind & Solar Energy)





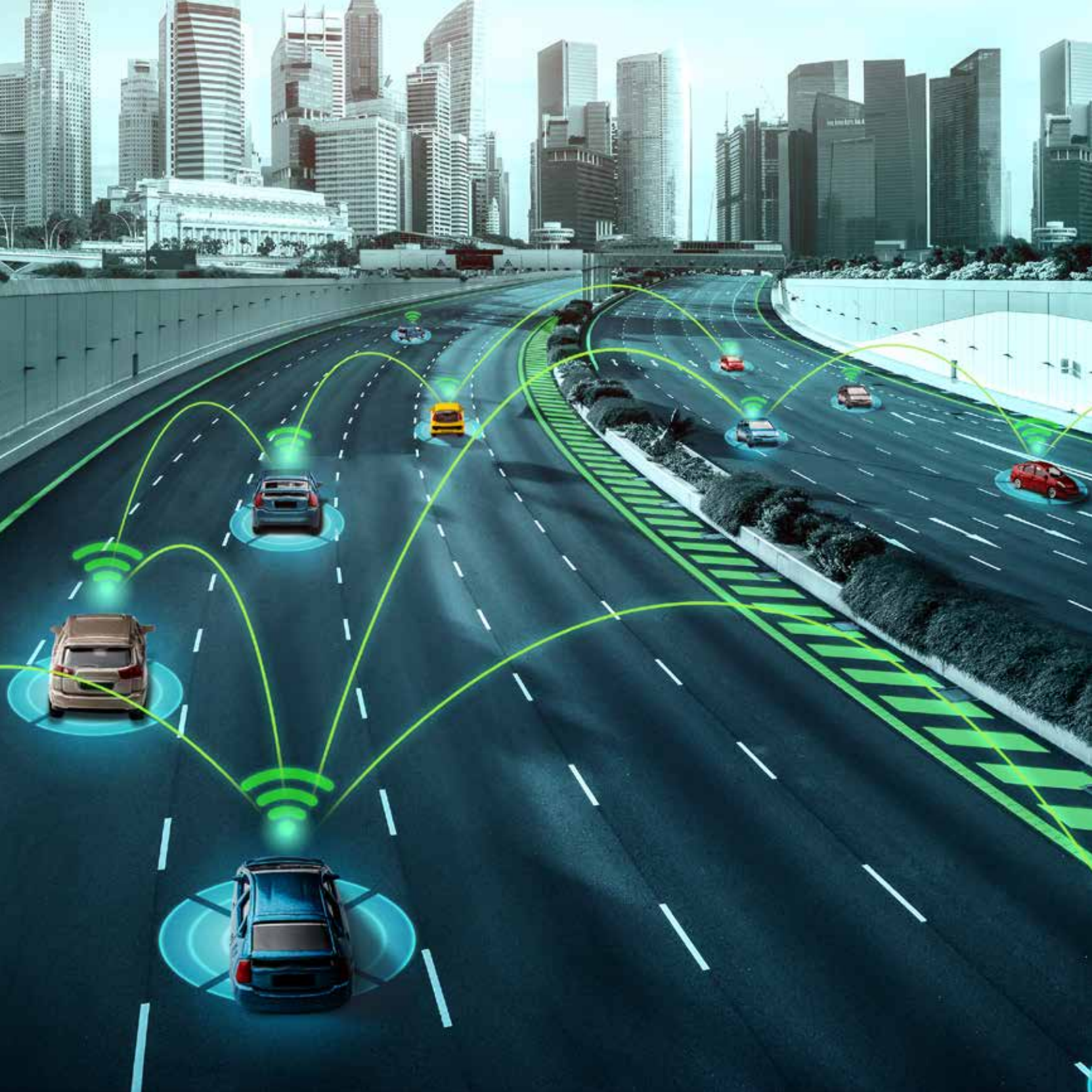
## REMOTE SENSING

*Smart Solutions with Satellite Imagery and Artificial Intelligence*

**Providing Satellite Images with Göktürk-1, Maxar, Airbus, SpaceWill**

### **AI-Based Image Processing Services**

- Orthorectification & Mosaicking
- DTM & DSM Production
- Land-Use and Cover Classification
- Structure Detection and Monitoring
- Forecasting Crop Type and Yield in Agricultural Areas
- Detection of Environmental Degradation
- Change Detection in Natural Resources
- Pre- and Post-Disaster Damage Assessment
- Urban Development and Change Analysis





## SMART SYSTEMS

### IoT Platform for Smart Transportation

#### *Enabling Safer, Smarter, and More Sustainable Mobility*

Our next-generation, microservice-based software platform centralizes the management of all traffic components.

- Smart Traffic Lights
- Real-Time Cameras & Sensors (Monitor your city 24/7)
- V2X Communication - Vehicles and infrastructure in sync
- Mobile App & Smart Traffic Services (Provide live updates and valuable information for drivers)
- Dynamic Message & Traffic Signs (DMS-DTS) (Inform, guide, and protect road users)

### V2X Services for Next-Generation Autonomous Driving

#### *Enabling Real-Time Warnings and Communication in Live Traffic*

- Road Work Warning
- In-Vehicle Traffic Signs
- In-Vehicle Speed Limit
- Emergency Vehicle Alert
- Weather Conditions
- Slow or Stopping Vehicle Warning
- Green Light Optimum Speed Recommendation
- Dangerous Road/Area Warning
- Traffic Signal Priority Request for Specific Vehicles
- Reverse Direction Driving Warning
- Road Driving Comfort
- High Accident Intensity Area Service





## Centralized Tunnel Management System

Intelligent Transportation Systems (ITS), managing highway tunnels through a microservice-based and horizontally scalable architecture

- Enhanced tunnel traffic safety
- Automated decision-making processes
- Reduced maintenance and operational costs
- Increased tunnel efficiency and reliability

## High-Speed Weigh-In-Motion (HSWIM) System

*Real-Time, Contactless Vehicle Weighing for Safer and Greener Highways*

Next-generation inspection and data platform that enables real-time, high-precision, and non-intrusive weighing of moving vehicles across highway networks

- Improved road safety through weight regulation
- Increased fuel efficiency
- Smoother traffic flow with non-stop operation
- Reduction in emissions and environmental impact

## Smart Health Mobility Solutions

*Enhancing Emergency Response with Real-Time Data and Safer Transport*

Real-time transmission of critical health data during emergencies for faster and more effective medical response

- Immediate sharing of patient vitals with hospitals
- Safer and more efficient ambulance navigation
- Route optimization for emergency vehicles
- Faster access to emergency care

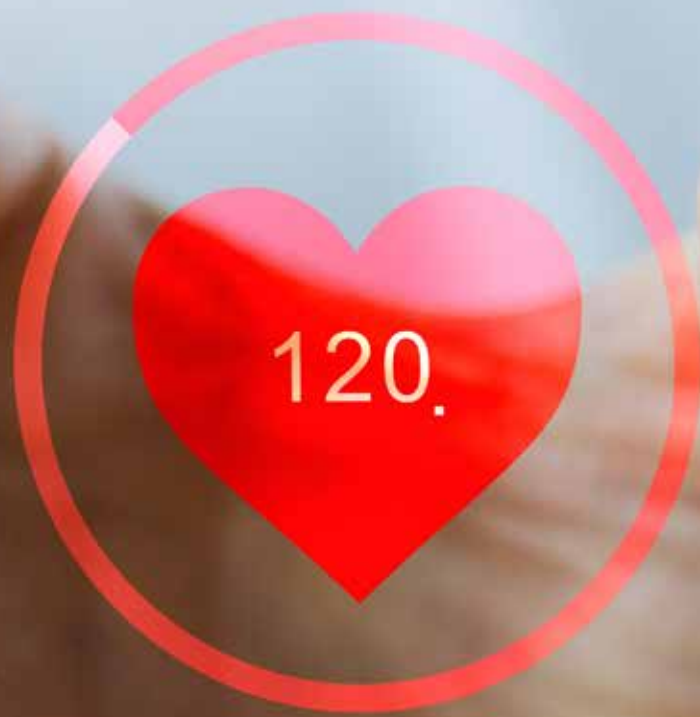


12:03



exercise  
workout

your heart rate is 120 bpm



## Smart Electronic Convict Monitoring System

### *Secure and Real-Time Monitoring for Judicial Control*

The Electronic Monitoring System enables real-time tracking of individuals under judicial control through AI-powered software and GPS-supported electronic wristbands

- House Arrest
- Instant Monitoring
- Victim-Proximity Unit

## ARTIFICIAL INTELLIGENCE

### *Precision Monitoring, Smarter Planning – Powered by AI and Satellite Technology*

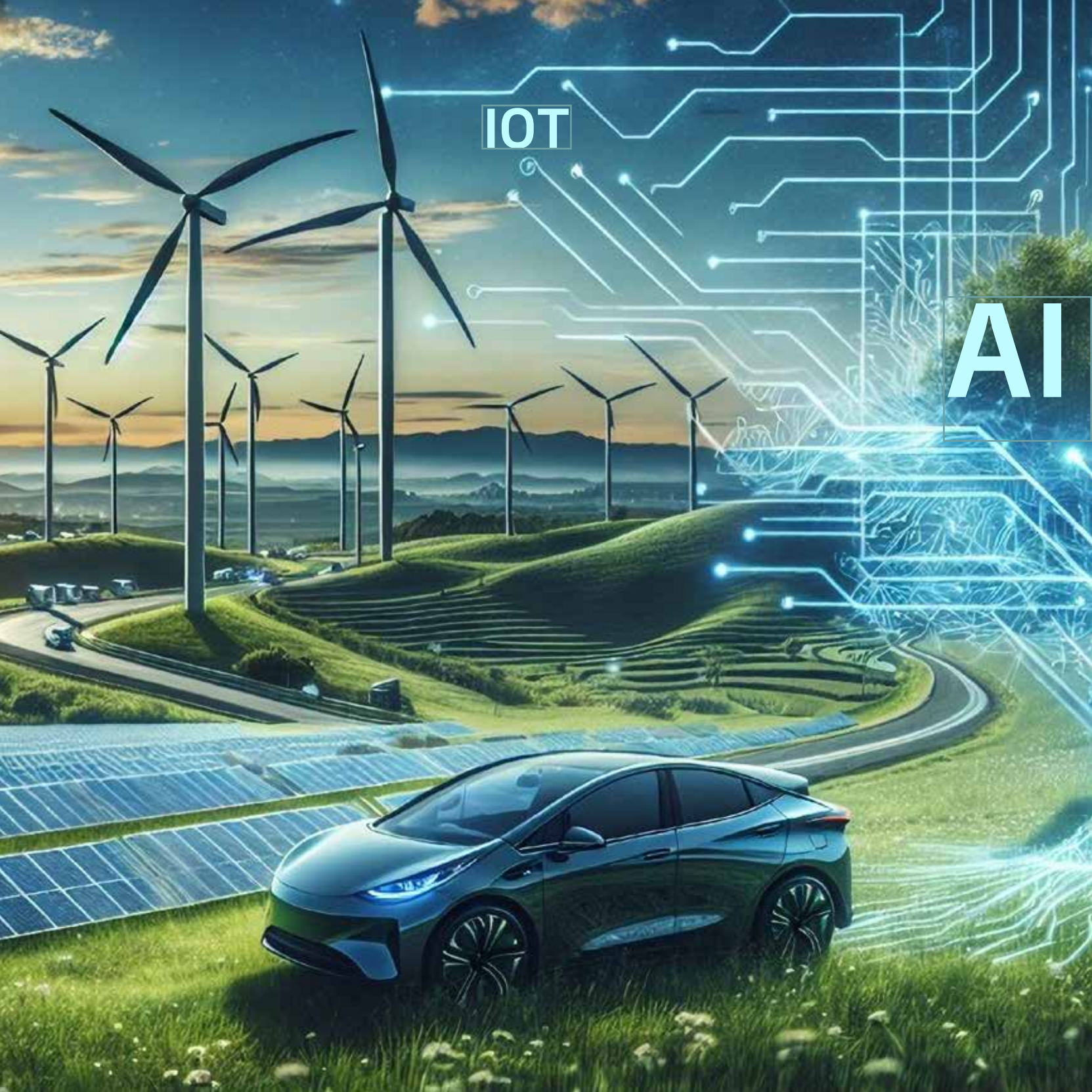
## AI and Satellite-Based Remote Sensing

### *Tracking and analyzing agricultural products with 99% success*

- Crop Type Classification
- Planting Area Determination
- Plant Growth Monitoring
- Yield Forecast
- Pest or Disease Identification
- Forest Area Monitoring
- Fire Damage Analysis
- Deforestation Detection
- Terrestrial Biodiversity Monitoring
- Detection of Illegal Agriculture & Logging
- Dam & Lake Level Monitoring
- Desertification Detection
- Oil Spill Detection in Seas
- Building Footprint Segmentation
- Road & Transportation Network Extraction
- Urban Expansion & Land Use Change Detection
- Informal Settlement / Slum Detection
- Post-Disaster Building Damage Assessment

IOT

AI





## Satellite Image Resolution Enhancement

*Increase the resolution of images with AI for precise analysis*

- Super Resolution Algorithms (Diffusion-based, Transformer-based, GAN-based)
- Segmentation Models (U-Net family, SAM family)
- Time Series Analysis
- Automation (Copernicus API) & Preprocessing

## Chatbot - Intelligent Search Assistant

*Harness AI-powered conversational systems to simplify access to information and services.*

- Natural language processing and understanding
- Intelligent search across documents, databases, and services
- Conversational flow management
- Personalization
- Instant responses
- Task automation
- Multi-platform and multilingual support
- Voice-enabled interaction for hands-free use
- Continuous learning from user feedback for improved accuracy

## Intelligent Video Analytics System

*AI-driven video analysis for real-time monitoring, security and environmental insights*

- Object and activity detection
- Vehicle and traffic flow monitoring
- Unattended packet detection
- Camera sabotage detection
- Protected area entry detection
- Crowd detection and density/movement analysis
- Fire, smoke, and hazard identification
- Anomaly and intrusion detection
- Integration with satellite and drone footage
- Automated alerts and event-based notifications
- Data-driven dashboards and reporting for decision-making



**PRODUCTS**



## BELGENET (Electronic Document Management System)

*Securely manage your Electronic Documents, streamline internal communication, and accelerate your digital transformation*

BELGENET allows you to securely and efficiently manage your corporate documents in an electronic environment, in compliance with regulations and standards. Designed to quickly adapt to technological and legal changes, this application ensures your documents are always accessible.

### **System Features**

**Legal Compliance:** All processes are structured according to relevant legal regulations and standards, ensuring the validity of your documents.

**Fast and Accurate Application:** This system adapts rapidly to technological advancements, continuously enhancing your document management processes.

**Electronic Official Correspondence:** Ensures official correspondence between institutions is securely handled with e-signature and/or m-signature.

600

500

400

300

200

100

0

JAN

FEB

MAR

APR

MAY

JUN

JUL

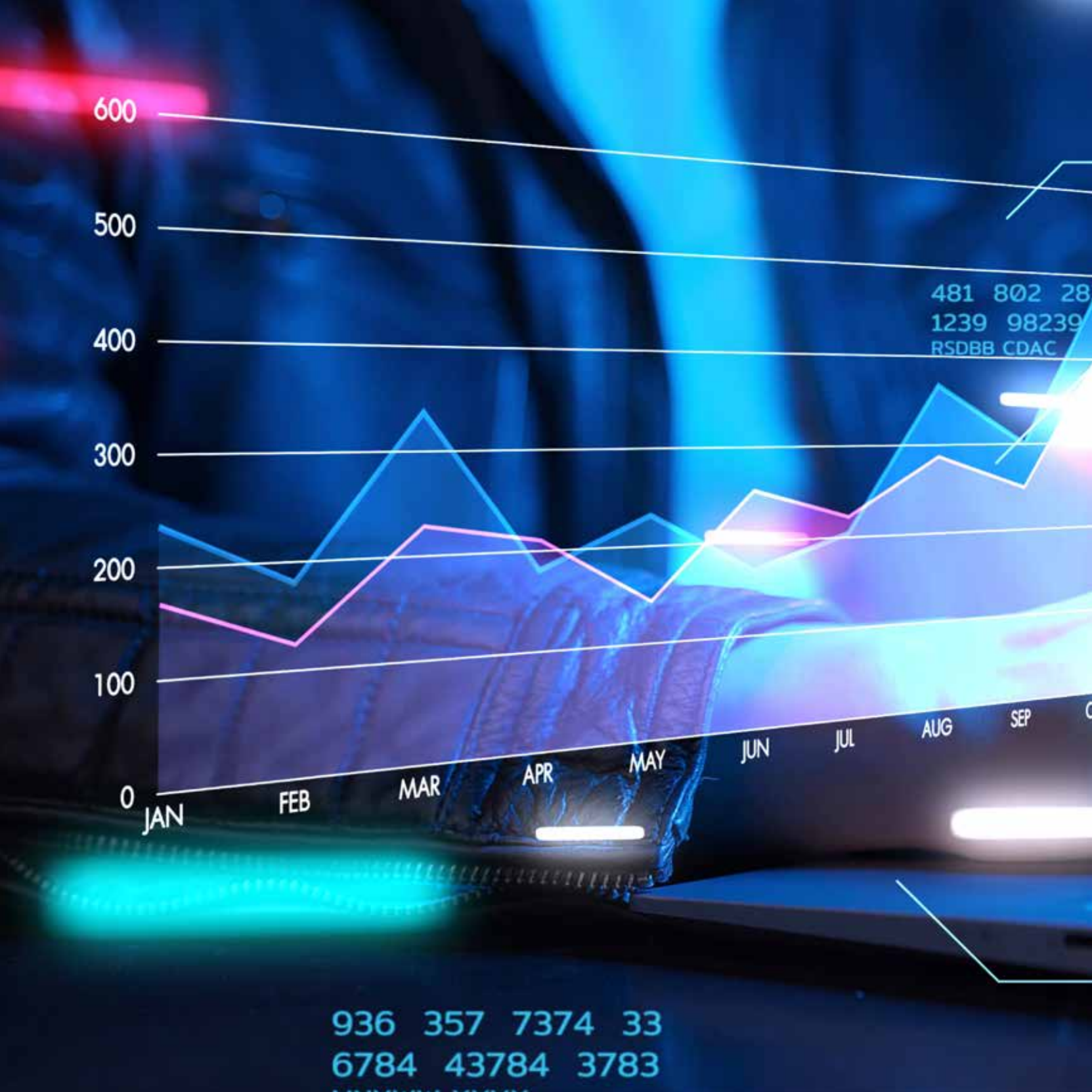
AUG

SEP

OCT

481	802	28
1239	98239	
RSDBB	CDAC	

936	357	7374	33
6784	43784	3783	





## Analytics Solution

*Enhance user experience and strengthen growth strategies with Türksat Analytics for comprehensive website and mobile application analysis*

Türksat Analytics is a comprehensive application that provides in-depth analysis for your website and mobile application. With an intuitive interface to track visitor behavior, traffic sources, and access platforms, it helps you gain a better understanding of your digital presence.

### Main Features

**Detailed Analytics:** Gain valuable insights to improve the user experience by monitoring visitor behavior and interactions.

**Traffic Sources:** Identify where your traffic comes from and use this data to engage your audience more effectively.

**Access Platforms:** Track which platforms your visitors use and optimize your strategies accordingly.

**High Traffic Performance:** Gain a competitive edge with specialized analysis tools designed for high-traffic websites.

**Data Security:** Ensure a secure analysis process by guaranteeing that all your data remains within Turkey.

## Customer Satisfaction





## Survey Application

*Drive engagement and increase effectiveness with our user satisfaction survey application, allowing for efficient evaluation of feedback and continuous improvement*

The user satisfaction survey application, specifically developed for ministries, municipalities, universities, and private sector organizations, is designed to drive continuous service improvement and enhance participation.

### Advantages of the Application

**Enhancing User Experience:** Improve service quality by providing an effective platform for collecting user feedback.

**Accessibility:** Design user-friendly surveys that are easily accessible to all stakeholders.

**Transparency:** Build trust with users by making your processes more visible.

**Innovation:** Evaluate and enhance services with an innovative approach using modern technologies.

**Engagement:** Increase user involvement, foster civic engagement, and deliver more effective services.



A vertical sidebar on the left side of the page features a dark blue background with various white and light blue technical graphics. These include a bar chart at the top, a circuit board-like pattern with arrows and dots, a line graph, and a cluster of hexagons at the bottom. The overall aesthetic is modern and data-oriented.

## Single Sign-On

### *Seamless Access, One Login - Simplify Security with Single Sign-On*

This platform enables Single Sign-On (SSO) authentication for Business-to-Consumer (B2C) and Consumer-to-Business (C2B) e-commerce transactions. Regulatory bodies may require business owners and consumers to verify their online accounts through SSO to ensure secure transactions in property and vehicle sales or rentals.

### **System Features & Advantages**

**e-Government Gateway Authentication:** Users must verify their account via the 'e-Government Gateway Authentication System' to post, edit, or republish advertisements.

**Secure Transactions:** Advertisements can only be posted securely after verifying the user's identity information.

**Easy Integration:** The electronic advertisement verification system integrates seamlessly with e-commerce sites via the Ministry of Commerce, offering an easy-to-use solution.

**Commercial Model Development:** A functional verification infrastructure is created by establishing a commercial model for authentication requests from private sector organizations.

**Market Opportunity:** Marketing the authentication infrastructure to private companies will enhance competitiveness within the sector.





## ArşivNet

*Choose ArşivNet to boost productivity and modernize your archiving processes. Enhance efficiency and security while safeguarding your data in the digital world*

ArşivNet is an electronic archive management system that enables businesses to manage archive materials digitally, preventing damage or loss. The system enhances efficiency by offering classification, as well as time and location-independent access and management capabilities for your archives.

### **Main Features**

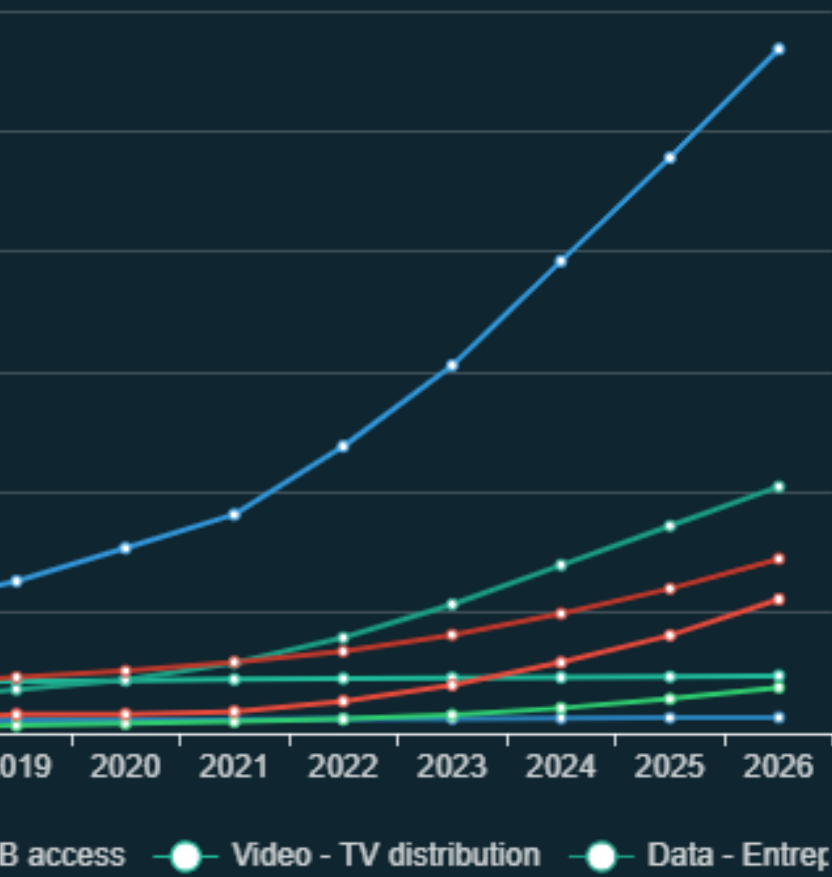
**Damage-Free and Lossless Archiving:** Securely convert physical documents to digital format, eliminating the risk of damage or loss.

**Time/Location Independent Access:** Streamline business processes with access to your archives anytime, anywhere.

**Integration Opportunities:** Enjoy a seamless experience with integration to ArşivNet, BELGENET, and other Electronic Document Management System (EBYS) solutions.

**Advanced Scanning Module:** Scan physical documents, digitize them using Optical Character Recognition (OCR) technology, and simplify your archiving process.

Capacity used in Gbps by application/year

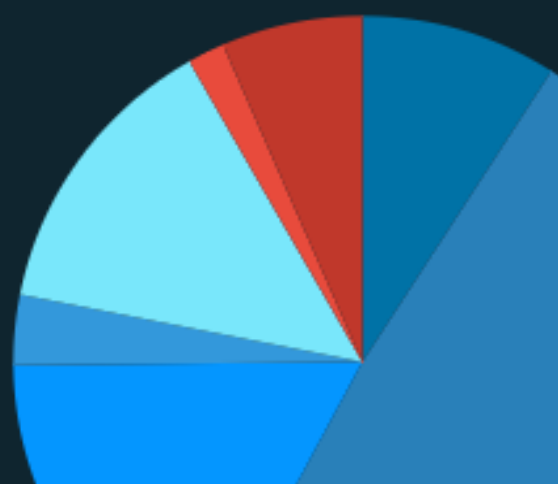


### Consolidated Capacity Used by Application

Total Capacity  
**51.338**

IP access ● Video - TV distribution ● Data - Enterprise ◀ 1/3 ▶

data  
video



sed in Gbps

n

ity

## Long-Range Identification and Tracking of Ships (LRIT)

*Secure your seas and Ensure global compliance with Türksat LRIT*

In accordance with the International Maritime Organization (IMO) and the Maritime Safety Committee (MSC) decisions, all countries that are party to the International Convention for the Safety of Life at Sea (SOLAS) are required to participate in the LRIT system.

Our LRIT system enables global identification and monitoring of vessels, providing full compliance, reliability, and secure data exchange in real-time reporting from ships to their respective flag states. Through this system, passenger ships (including high-speed vessels), cargo ships of 300 gross tons and above, and offshore drilling platforms can be tracked worldwide.

### **Purpose of the Service**

- Enhancing navigational safety and maritime security
- Supporting search and rescue operations
- Contributing to environmental protection efforts

### **Information and Services Provided**

- Ship identification details
- Location data (latitude and longitude)
- Time and status information
- Mobile and tablet access solutions
- Monitoring and control applications
- Reporting, statistics, and pricing tools
- 24/7 technical support and maintenance



*[Handwritten signature]*

Signature

Signa



## ProjeM

*Manage your projects more efficiently, improve your processes and take firm steps towards success*

ProjeM is a comprehensive project, portfolio, and ecosystem management program designed to provide better control and development of projects, processes, products, and services throughout their lifecycle.

### Feature Highlights

**Comprehensive Project Management:** Boost efficiency by managing all your project processes on a single platform.

**Portfolio Management:** Optimize resource use by evaluating and managing multiple projects together.

**Process Improvements:** Continuously enhance outcomes by improving every stage of your projects.

**Easy to Use:** Help your teams adapt quickly with their intuitive, user-friendly interface.



## ImzaNet

*Robust Solution for Secure, High-Level Electronic Signature Integration in Third-Party Applications.*

ImzaNet enables third-party applications to electronically sign in CAAdES, XAdES, and PAdES formats.

### Feature Highlights

**Various Standards:** Supports CAAdES, XAdES, and PAdES formats, offering flexible solutions to meet electronic signature needs.

**Easy Integration:** Boost efficiency with a user-friendly interface that integrates seamlessly into your existing systems.

**Safe and Fast Transactions:** Allowing you to save time by swiftly and securely signing documents electronically, compared to hand-written signatures.

**Compliance:** Ensure legal validity with electronic signature solutions that comply with current regulations.

701624752

829488557

4.36

2.47

01100100	01101100
01010100	01101000
01100001	00100001
01101100	01101100
01010100	01101000
01100101	00100001
01101100	01101100
01010100	01101000
01100101	00100001
01101100	01101100
01010100	01101000
01100101	00100001

7778623

## References



GRAND NATIONAL ASSEMBLY of TURKIYE ASSEMBLY



PRESIDENCY of THE REPUBLIC of TURKIYE SECRETARIAT-GENERAL of THE NATIONAL SECURITY COUNCIL



PRESIDENCY of THE REPUBLIC of TURKIYE DIGITAL TRANSFORMATION OFFICE



PRESIDENCY of THE REPUBLIC of TURKIYE HUMAN RESOURCE OFFICE



PRESIDENCY of THE REPUBLIC of TURKIYE DIRECTORATE of COMMUNICATIONS



PRESIDENCY of THE REPUBLIC of TURKIYE INVESTMENT OFFICE



MINISTRY of TREASURY & FINANCE



MINISTRY of HEALTH



MINISTRY of CULTURE & TOURISM



MINISTRY of TRANSPORT & INFRASTRUCTURE



MINISTRY of LABOR & SOCIAL SECURITY



MINISTRY of AGRICULTURE & FORESTRY



MINISTRY of JUSTICE



MINISTRY of ENERGY & NATURAL RESOURCES



PUBLIC PROCUREMENT AUTHORITY



TURKISH DIRECTOR GENERAL of COASTAL SAFETY



TURKISH COURT of ACCOUNTS



TURKISH COOPERATION & COORDINATION AGENCY



CENTRAL BANK of THE REPUBLIC of TURKIYE



TURKIYE DIRECTORATE GENERAL of CIVIL AVIATION



TURKISH ELECTRICITY TRANSMISSION CORPORATION



SOCIAL SECURITY INSTITUTION



TURKISH GENERAL DIRECTORATE of HIGHWAYS



TURKISH HYDRAULIC WORKS



ROKETSAN



ANKARA UNIVERSITY



SINOP UNIVERSITY



MARDIN ARTUKLU UNIVERSITY



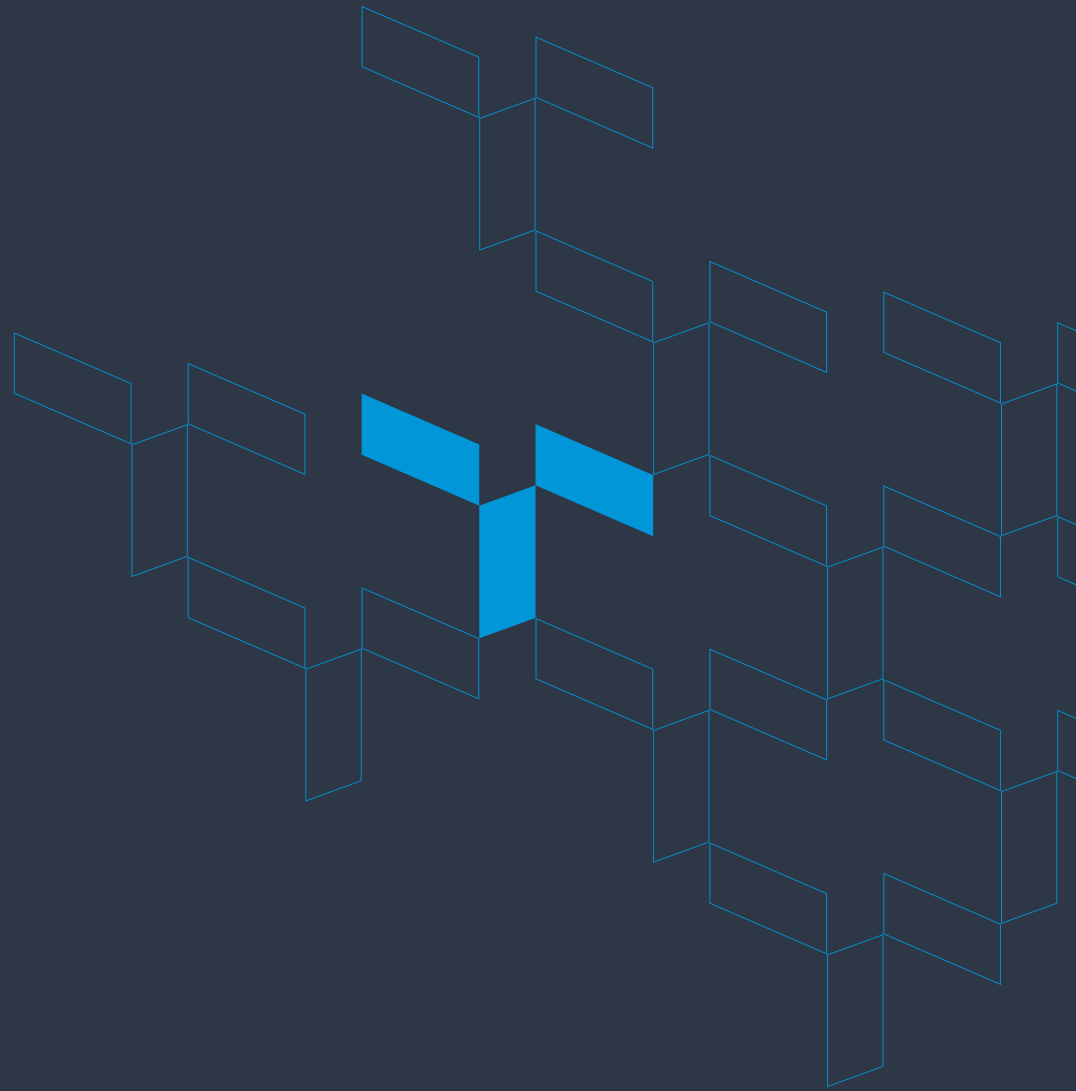
ANTALYA METROPOLITAN MUNICIPALITY

BelgeNet is widely utilized by nearly all ministries and institutions across Türkiye

 **TÜRKSAT**  
everywhere











Türksat Satellite Communication Cable TV and Business Inc.

Konya Yolu 40. Km Gölbaşı / T +90 (312) 615 30 00 / egov-projects@turksat.com.tr  
06839 Ankara, Türkiye / F +90 (312) 499 51 15 / https://bilisim.turksat.com.tr